



Photograph: Jan Arne Wold / Woldcam / Equinor

Environmental Protection Solutions

Wind Walls – Wind Shield Cladding

Wind Walls - Shield Cladding

MTE wind walls – wind shield cladding can be supplied in a variety of materials i.e. stainless steel, galvanised or painted carbon steel.

MTE wind walls are solid i.e. unperforated profiled sheets whereas wind shield panels have perforated profiled sheets. Both panel types can be supplied with either end angles welded to the profiled sheet with the end angles bolted to the supporting steel or just the profiled panel fixed to the supporting steelwork.

MTE have predominately two types of wind wall wind shield systems.

Fixed Wind Walls – Wind Shields – This is where there is available structure to fit support rails to and the wall can be mechanically fixed to by either bolts or self-tapping screws to that structure. The walls can be either vertically or horizontally spanning.

Free Standing Wind Walls – Wind Shields – Where there is no available structure MTE can design and supply vertical structural posts which can be either welded or bolted to the platform deck, typically the wind walls - wind shields span horizontally between these posts.

Wind shield cladding is designed to provide the maximum ventilation outlet, minimum weight and minimum reaction forces into the structure, whilst maintaining manageable span panels. The optimum supply therefore is to standardise with 1.5mm thick 316L perforated to achieve a 40% open area.

Wind wall & wind shield panels are pressed into trapezoidal sections with longitudinal edge returns to provide strength. They are designed to run horizontally to a height of 3m between posts designed to cantilever up from the deck and these will be positioned at centres to suit clients requirements up to a maximum of 3m.



Total Carina Aries Project



Gaz de France Cygnus Project

MTE have tested the systems extensively at the Building Research Establishment (BRE) and had these tests witnessed by Lloyds Register.

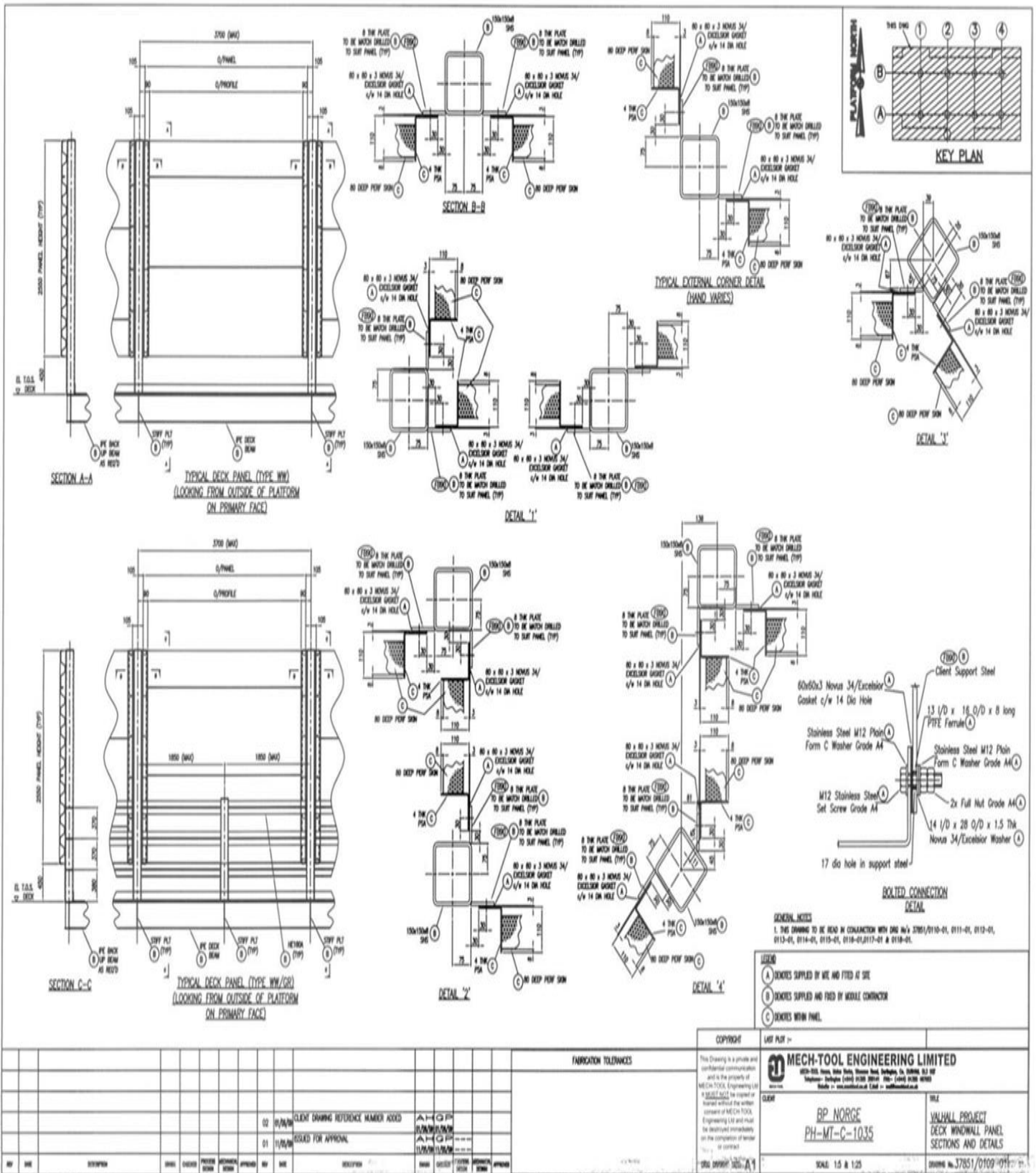
Testing concentrated upon wind speed reduction and noise generation. The findings of the noise generation tests determined that the introduction of the cladding panels to the support frame caused no direct increase in noise measured (within the limits of experimental error).

The tests exposed to panels to wind speeds of up to 25m/s at various angles to the test subject.

MTE wind walls – wind shields do not have any moving parts and are designed to work as efficiently as possible at providing protection from storm winds and driving rain. MTE wind walls achieve an immediate percentage reduction in incident wind velocity more than 75%. The energy dissipating design of the system means that half a metre behind the panel the percentage reduction in wind velocity increases to 86%. MTE wind walls have been fully tested to ensure no additional background wind noise is generated.



Gaz de France Cygnus Project



BP Vallhall Project Deck wind walls protection panels – (framed option)

The MTE Advantage

- ✓ **Proven Performance** – Designed to meet your environmental requirements
- ✓ **Custom-Built Solutions** – Tailored to your project needs
- ✓ **Trusted Globally** – Installed in major energy and industrial facilities worldwide
- ✓ **Efficient Installation** – No specialist tools required

Your Safety. Our Priority.

UK and Europe

Mech-Tool Engineering Ltd
Whessoe Road
Darlington
County Durham England
DL3 0QT

T: +44 (0) 1325 355141
F: +44 (0) 1325 487053
E: sales@mechtool.co.uk

Korea

Mech-Tool Korea inc,
17 Hwajeonsandan 5-ro
84 Beon-gil, Kangseo-gu
Busan
Republic of South Korea 46738

T: T: +82 (0) 55 541 1969
F: +82 (0) 55 541 1909
E: sales@mechtool.co.uk



www.mechtool.co.uk

